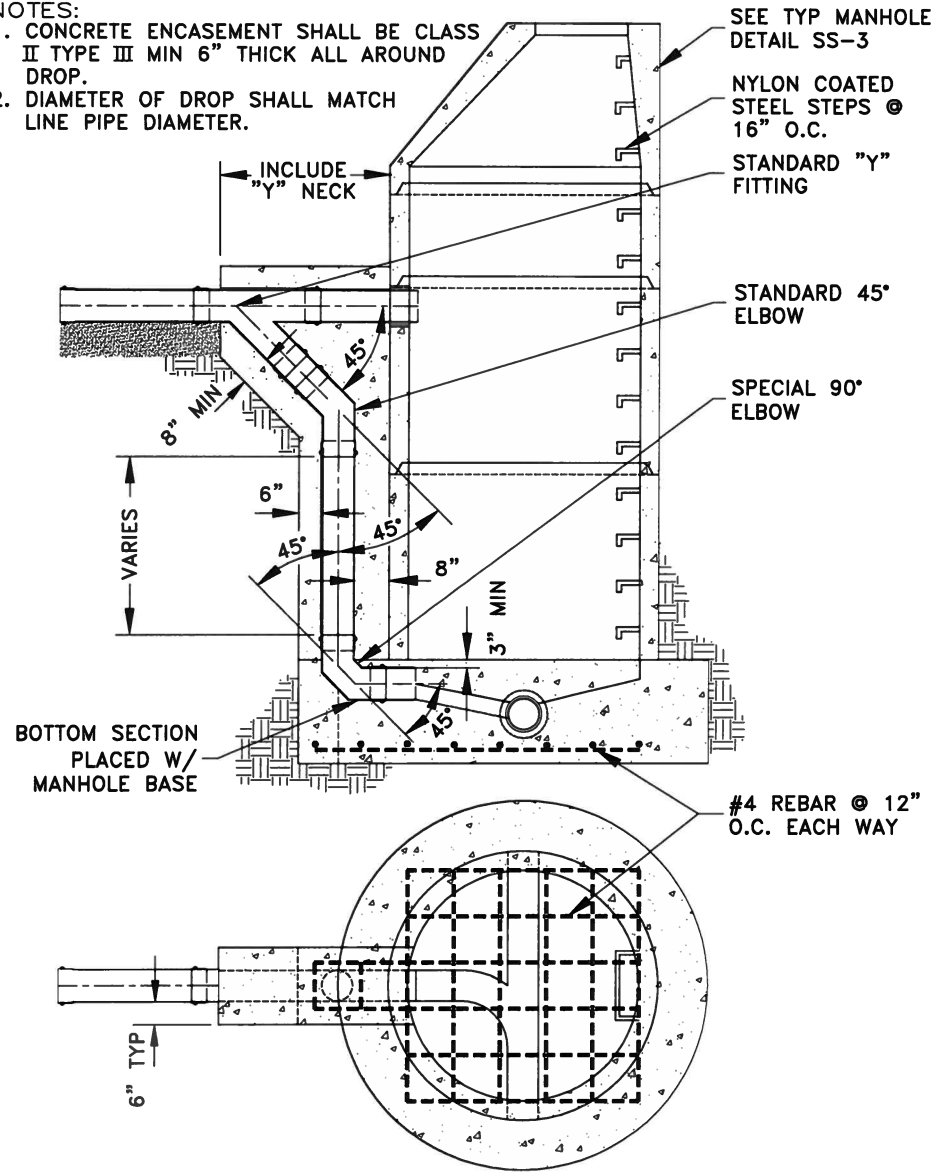


NOTES:

1. CONCRETE ENCASEMENT SHALL BE CLASS II TYPE III MIN 6" THICK ALL AROUND DROP.
2. DIAMETER OF DROP SHALL MATCH LINE PIPE DIAMETER.



Sheet Revisions

Date	Comments



Town of Castle Rock
 100 N. Wilcox St.
 Castle Rock, CO 80104
 Phone: (720) 733-2200
 Fax: (720) 733-2217
 Development Services

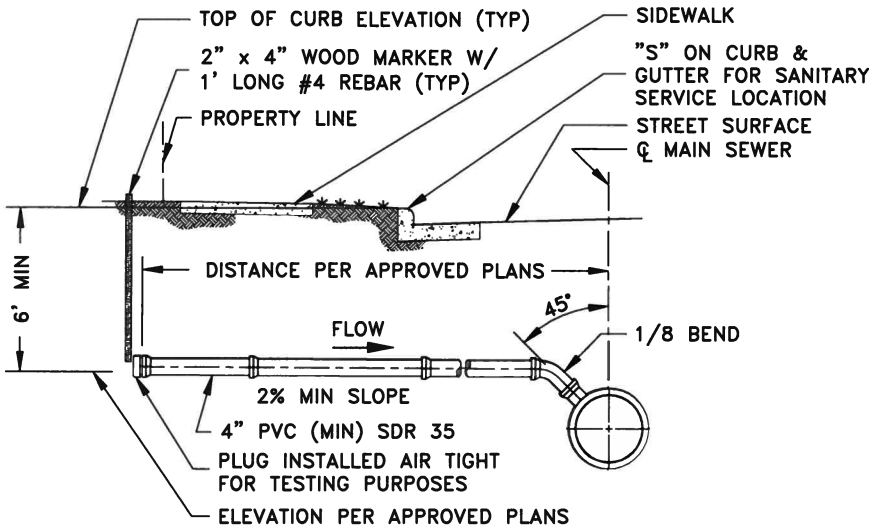
SEWER
 OUTSIDE DROP MANHOLE

Issued By: Town of Castle Rock, Development Services March 31, 2010

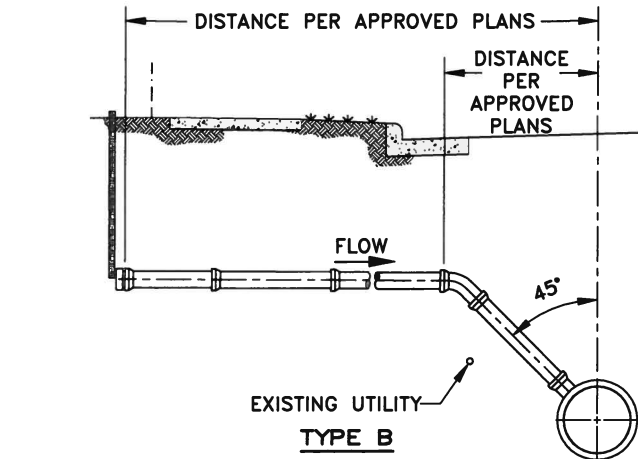
DETAIL PLAN NO.

SS-1

Sheet 1 of 1



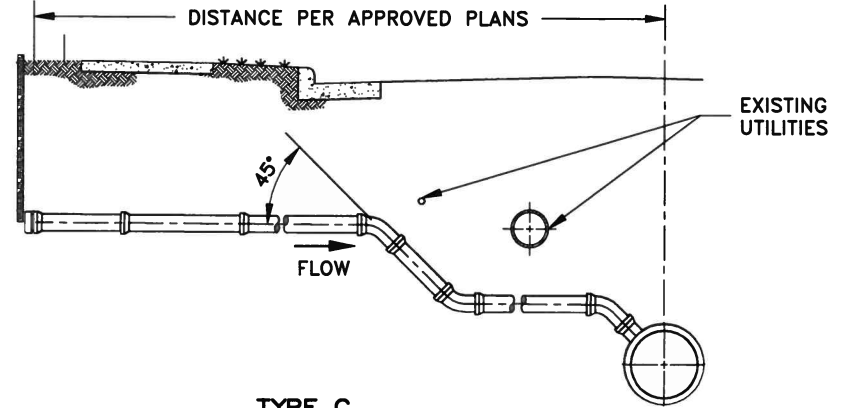
TYPE A



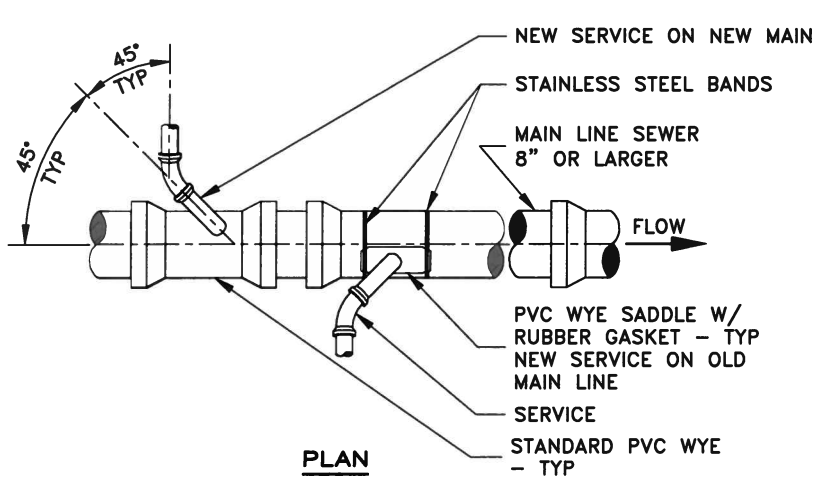
TYPE B

NOTES:

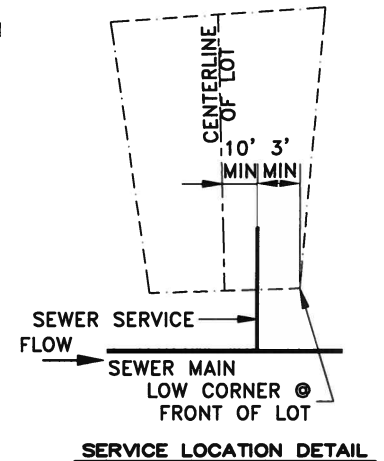
1. TYPE "A" ELEMENTS ARE TYPICAL FOR ALL TYPES UNLESS SPECIFICALLY NOTED OTHERWISE.
2. ALL LATERALS SHALL BE LOCATED 10' MINIMUM DISTANCE FROM THE DOWNHILL PROPERTY LINE OF THE SERVICE SIDE OF THE LOT, UNLESS OTHERWISE APPROVED BY THE TOWN PRIOR TO INSTALLATION.
3. ALL SEWER LATERAL CONNECTIONS SHALL BE TYPE "A" AND SHALL BE CONSTRUCTED ON A STRAIGHT LINE AND GRADE BETWEEN CONTROL POINTS EXCEPT AS OTHERWISE INDICATED ON THE APPROVED PROJECT PLANS.



TYPE C



PLAN



SERVICE LOCATION DETAIL

Sheet Revisions

Date	Comments



Town of Castle Rock
 100 N. Wilcox St.
 Castle Rock, CO 80104
 Phone: (720) 733-2200
 Fax: (720) 733-2217
 Development Services

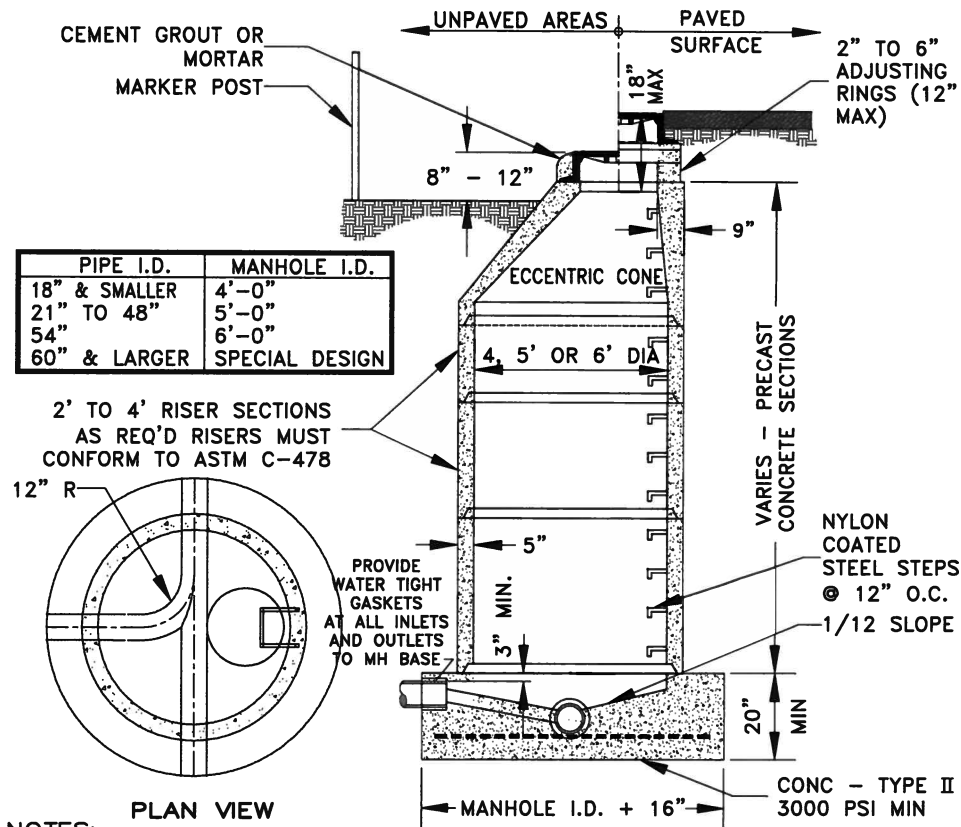
**SEWER
 LATERAL CONNECTIONS**

Issued By: Town of Castle Rock, Development Services March 31, 2010

DETAIL PLAN NO.

SS-2

Sheet 1 of 1



NOTES:

1. BARREL DIAMETER SHALL CONFORM TO THE TABLE ABOVE.
2. FLAT CONCRETE MANHOLE TOPS MAY BE USED INSTEAD OF CONE SECTIONS WHERE RIM TO INVERT IS 7'-0" OR LESS.
3. SET EACH ADJUSTING RING IN A FULL BED OF BITUMINOUS MASTIC (RAMNECK) OR PLASTIC SEALING COMPOUND.
4. MANHOLE STEPS SHALL BE POSITIONED OVER THE BENCH IN A VERTICAL LINE.
5. ON STRAIGHT THROUGH GRADES, SEWER MAINS MAY BE LAID THROUGH THE MANHOLE & USED AS THE INVERT. THE TOP 1/2 PORTION OF THE PIPE SHALL BE CUT AWAY TO A NEAT LINE. ANY BROKEN EDGES SHALL BE PLASTERED SMOOTH WITH CONCRETE MORTAR. IF GRADE IS NOT STRAIGHT THROUGH, THE FLOWLINES AT THE BASE SHALL BE HAND FORMED WHEN THE BASE IS POURED. FLOWLINES SHALL BE GROUND SMOOTH WITH A CONCRETE FINISHING STONE.
6. GROUT ALL INSIDE JOINTS WITH CONCRETE MORTAR.
7. MANHOLE LID SHALL BE 1/4" TO 1/2" BELOW ASPHALT AND TIPPED TO CONFORM WITH PAVEMENT SLOPES.

Sheet Revisions

Date	Comments



Town of Castle Rock
 100 N. Wilcox St.
 Castle Rock, CO 80104
 Phone: (720) 733-2200
 Fax: (720) 733-2217
Development Services

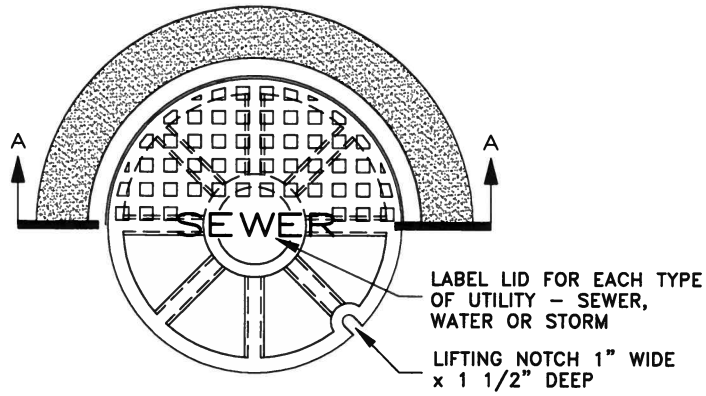
SEWER MANHOLE

Issued By: Town of Castle Rock, Development Services March 31, 2010

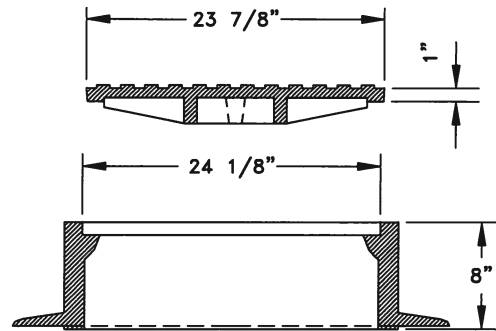
DETAIL PLAN NO.

SS-3

Sheet 1 of 3



HALF PLAN



SECTION A - A

NOTES:

1. CASTING SPECIFICATIONS: ASTM A-48 WITH A MINIMUM TENSILE STRENGTH OF 30,000 PSI (CLASS 30). (NEENAH TYPE R-1706 RING & COVER OR EQUIVALENT).
2. TOTAL MINIMUM WEIGHT APPROXIMATELY 410 LBS.
3. DO NOT USE IN APPLICATIONS WHERE MANHOLES ARE WITHIN DRAINAGE WAYS.
4. STANDARD MANUFACTURER'S LETTERING SIZES & PATTERNS. (LETTERING SHALL BE CAST AS PART OF COVER).

Sheet Revisions

Date	Comments



Town of Castle Rock
 100 N. Wilcox St.
 Castle Rock, CO 80104
 Phone: (720) 733-2200
 Fax: (720) 733-2217
Development Services

**SEWER MANHOLE
 24" RING & COVER**

Issued By: Town of Castle Rock, Development Services March 31, 2010

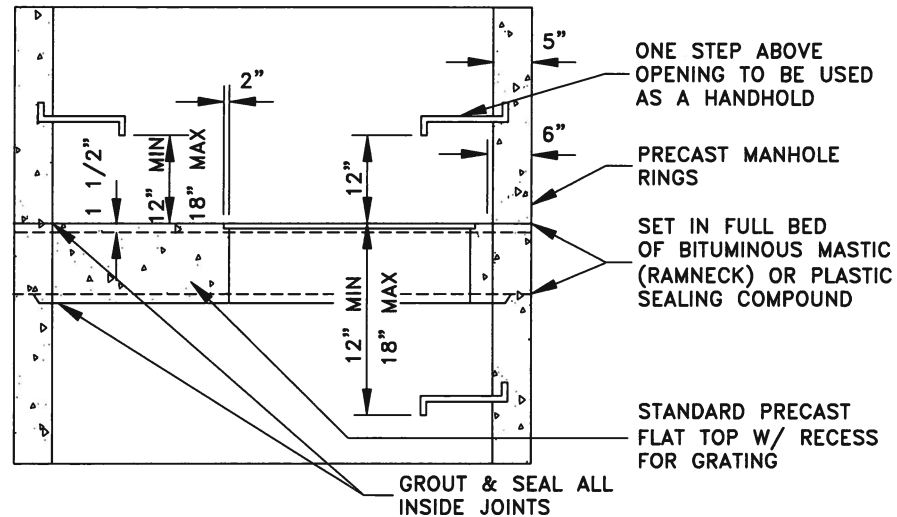
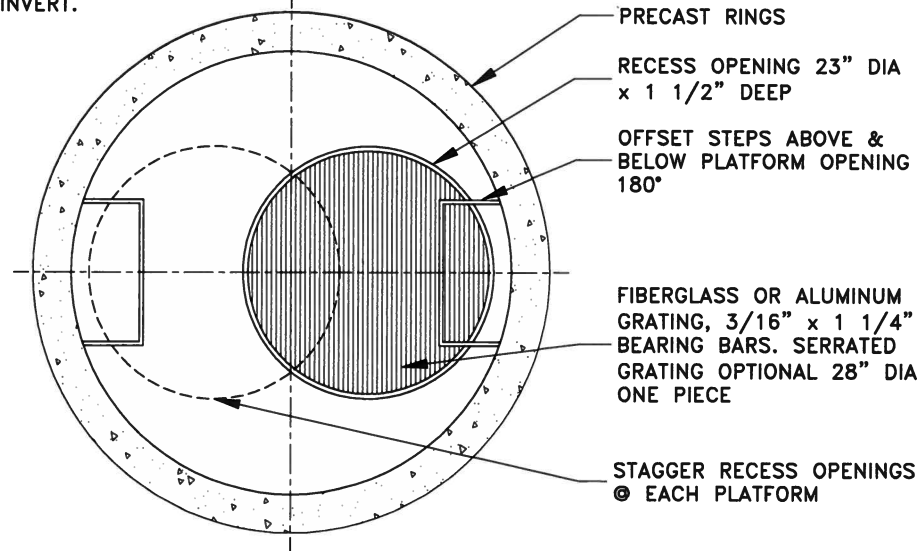
DETAIL PLAN NO.

SS-4

Sheet 2 of 3

NOTES:

1. AT TOWN'S DESCRETION, REQUIRED IN MANHOLES WHERE DEPTH MEASURED FROM RING AND COVER TO THE INVERT EXCEEDS 20 FEET.
2. VERTICALLY CENTER FLATTOP PLATFORM BETWEEN RING AND COVER AND MANHOLE INVERT.



Sheet Revisions	
Date	Comments



Town of Castle Rock
 100 N. Wilcox St.
 Castle Rock, CO 80104
 Phone: (720) 733-2200
 Fax: (720) 733-2217
Development Services

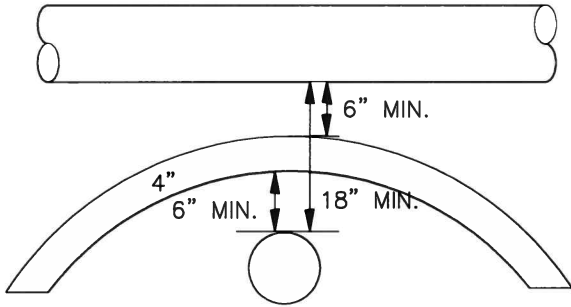
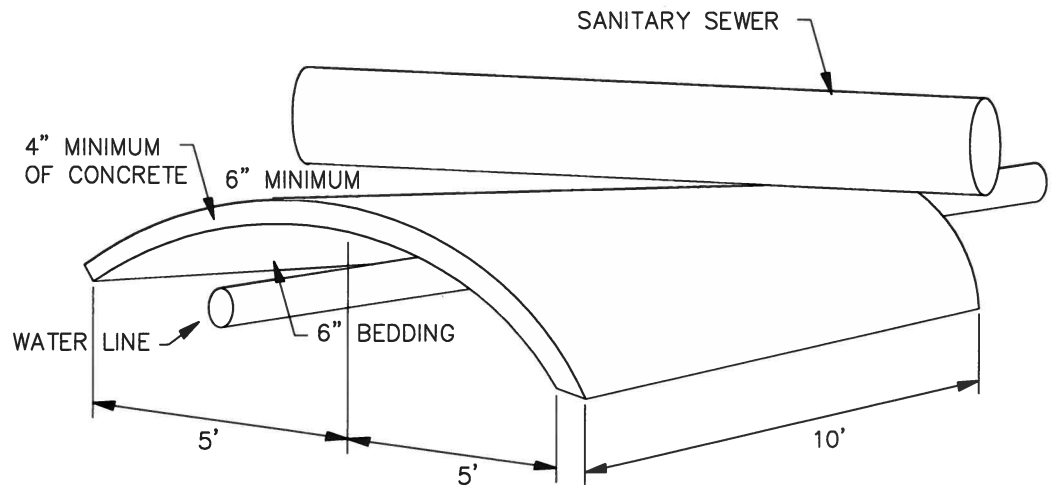
SEWER MANHOLE PLATFORM

Issued By: Town of Castle Rock, Development Services March 31, 2010

DETAIL PLAN NO.

SS-5

Sheet 3 of 3



Sheet Revisions	
Date	Comments



Town of Castle Rock
100 N. Wilcox St.
Castle Rock, CO 80104
Phone: (720) 733-2200
Fax: (720) 733-2217
Development Services

SEWER PIPE CROSSING CONCRETE BLANKET

Issued By: Town of Castle Rock, Development Services March 31, 2010

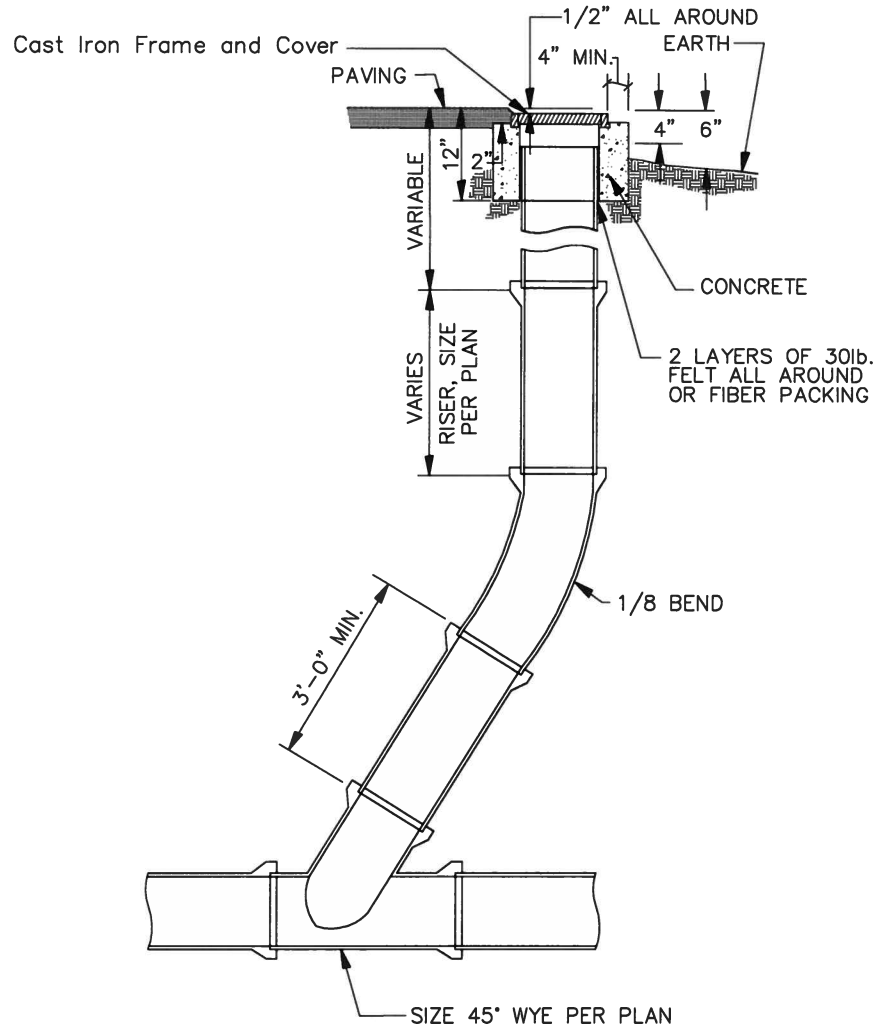
DETAIL PLAN NO.

SS-6

Sheet 1 of 1

DETAIL FOR CLEANOUTS
IN PAVED SURFACES

DETAIL FOR CLEANOUTS
IN EASEMENTS



Note: Cleanout pipe diameter shall be the same size as the sewer line at the wye.

Sheet Revisions	
Date	Comments



Town of Castle Rock
100 N. Wilcox St.
Castle Rock, CO 80104
Phone: (720) 733-2200
Fax: (720) 733-2217
Development Services

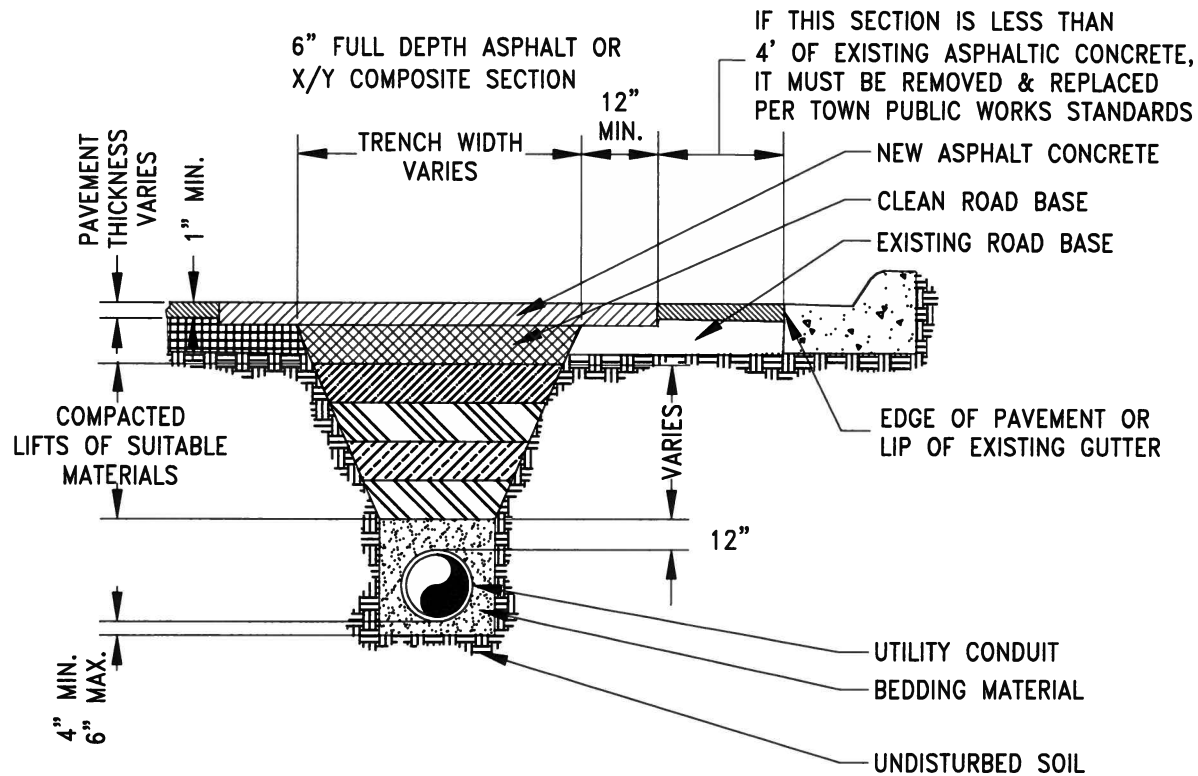
SEWER CLEANOUT

Issued By: Town of Castle Rock, Development Services March 31, 2010

DETAIL PLAN NO.

SS-7

Sheet 1 of 1



NOTES:

1. ALL TRENCHES SHALL BE BACKFILLED IN ACCORDANCE WITH THE ABOVE DETAIL UNLESS OTHERWISE SPECIFIED BY THE TOWN.
2. PRIOR TO PLACEMENT OF ASPHALT CONCRETE, PAVEMENT EDGE SHALL BE SAW CUT TO A CLEAN, VERTICAL & STRAIGHT EDGE.
3. 1-SAC SAND/CEMENT SLURRY MAY BE SUBSTITUEED FOR BACKFILL MATERIAL.
4. TRENCH WIDTH SHALL NOT BE MORE THAN 16" NOR LESS THAN 12" WIDER THAN THE DIAMETER OF THE PIPE.
5. USE #4 REBAR AT 2' CENTERS ALONG THE PERIMETER OF CONCRETE REPLACEMENT SECTIONS.
6. 95% COMPACTION IS REQUIRED ON ALL TRENCHING ZONES, BOTH IMPROVED & UNIMPROVED AREAS.
7. IN UNIMPROVED AREAS, ALL DISTURBED AREAS SHALL BE REGRADED, SEED & MULCHED.
8. IN CONCRETE ROADWAYS, A MINIMUM OF 1/2 PANEL WIDTH OR 10' x 5' SECTION WILL BE ALLOWED TO REMAIN, OTHERWISE THE ENTIRE CONCRETE PANEL MUST BE REPLACED.

Sheet Revisions	
Date	Comments



Town of Castle Rock
 100 N. Wilcox St.
 Castle Rock, CO 80104
 Phone: (720) 733-2200
 Fax: (720) 733-2217
 Development Services

**SEWER
 TRENCH DETAIL**

Issued By: Town of Castle Rock, Development Services March 31, 2010

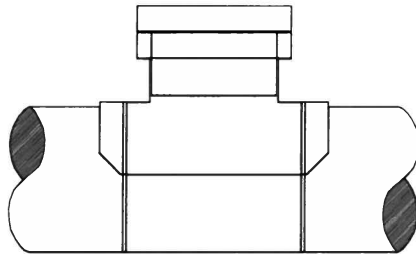
DETAIL PLAN NO.

SS-8

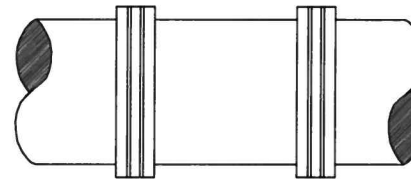
Sheet 1 of 1

SANITARY SEWER SERVICE LINE ABANDONMENT REQUIREMENTS

1. ABANDONMENT TO INCLUDE REMOVAL OF SERVICE WITHIN RIGHT-OF-WAY.
2. AREA TO BE REPAIRED AND REPLACED TO MATCH THE CONDITIONS OF SURROUNDING AREA.
3. ABANDONMENT REQUEST LETTER MUST BE SUBMITTED TO UTILITIES BILLING TO DISCONTINUE ACCOUNT.
4. PUBLIC WORKS PERMIT IS REQUIRED TO ABANDONED SERVICE.
5. ABANDONMENT OPTION TO BE DETERMINED BY PUBLIC WORKS INSPECTOR.
6. INTERNAL ABANDONMENT WITH CIPP LINING AS APPROVED BY UTILITIES. MINIMUM 10' SECTION OF LINING.



A.
FOR EXISTING SADDLE STRAP CONNECTION, PULL OUT EXISTING SERVICE AND INSTALL PLUG.



B.
REPLACE PIPE SECTION. CONNECTIONS SHOULD BE FERNCO STRONG BACK, CAULDER OR APPROVED EQUIVALENT. REPLACEMENT PIPE SHALL BE PVC SDR35 MIN. IF INSTALLED ON VCP OR OTHER LARGE DIAMETER PIPE, FACTORY TRANSITION COUPLING MUST BE USED.

Sheet Revisions

Date	Comments



Town of Castle Rock
100 N. Wilcox St.
Castle Rock, CO 80104
Phone: (720) 733-2200
Fax: (720) 733-2217
Development Services

**SEWER SERVICE LINE
ABANDONMENT DETAIL**

Issued By: Town of Castle Rock, Development Services March 31, 2010

DETAIL PLAN NO.

SS-9

Sheet 1 of 1